

SECTION "C-C" - CROSS-SECTION

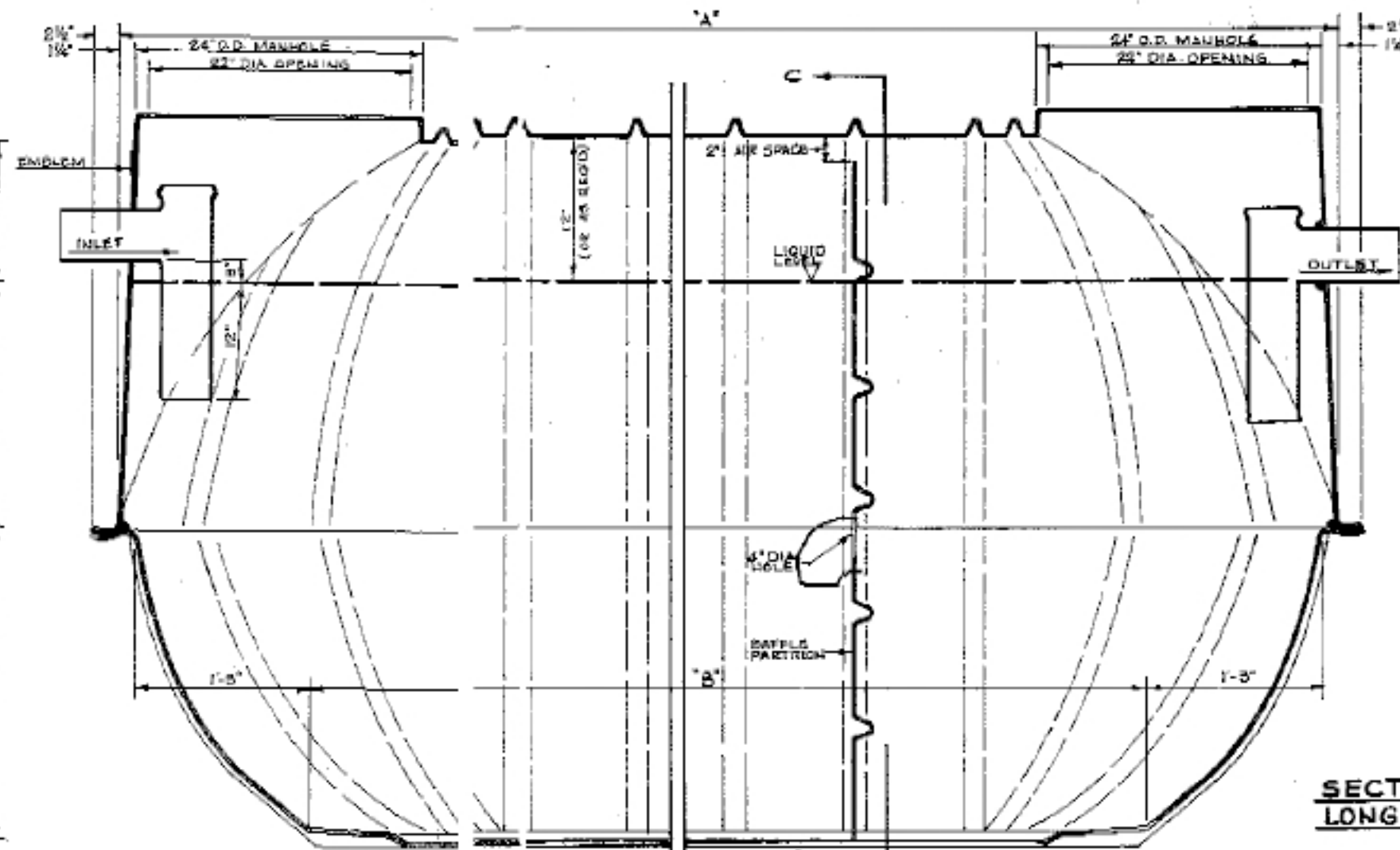
SEPTIC TANK SIZING SCHEDULE

TANK CAPACITY (GALLONS)	"A" EFFECTIVE LENGTH	"B" BOTTOM LENGTH	"C" CAPACITY EFFECTIVE LENGTH	"D" CAPACITY EFFECTIVE LENGTH	SECONDARY COMPARTMENT CAPACITY
855	7'-6 1/2"	4'-10"	5'-0"	2'-6 1/2"	260 GAL.
1088	9'-3"	6'-6 1/2"	5'-10 1/2"	3'-4 1/2"	374 GAL.
1250	11'-3"	7'-6 1/2"	6'-10 1/2"	3'-4 1/2"	374 GAL.
1500	13'-3 1/2"	9'-7"	8'-11"	3'-4 1/2"	374 GAL.

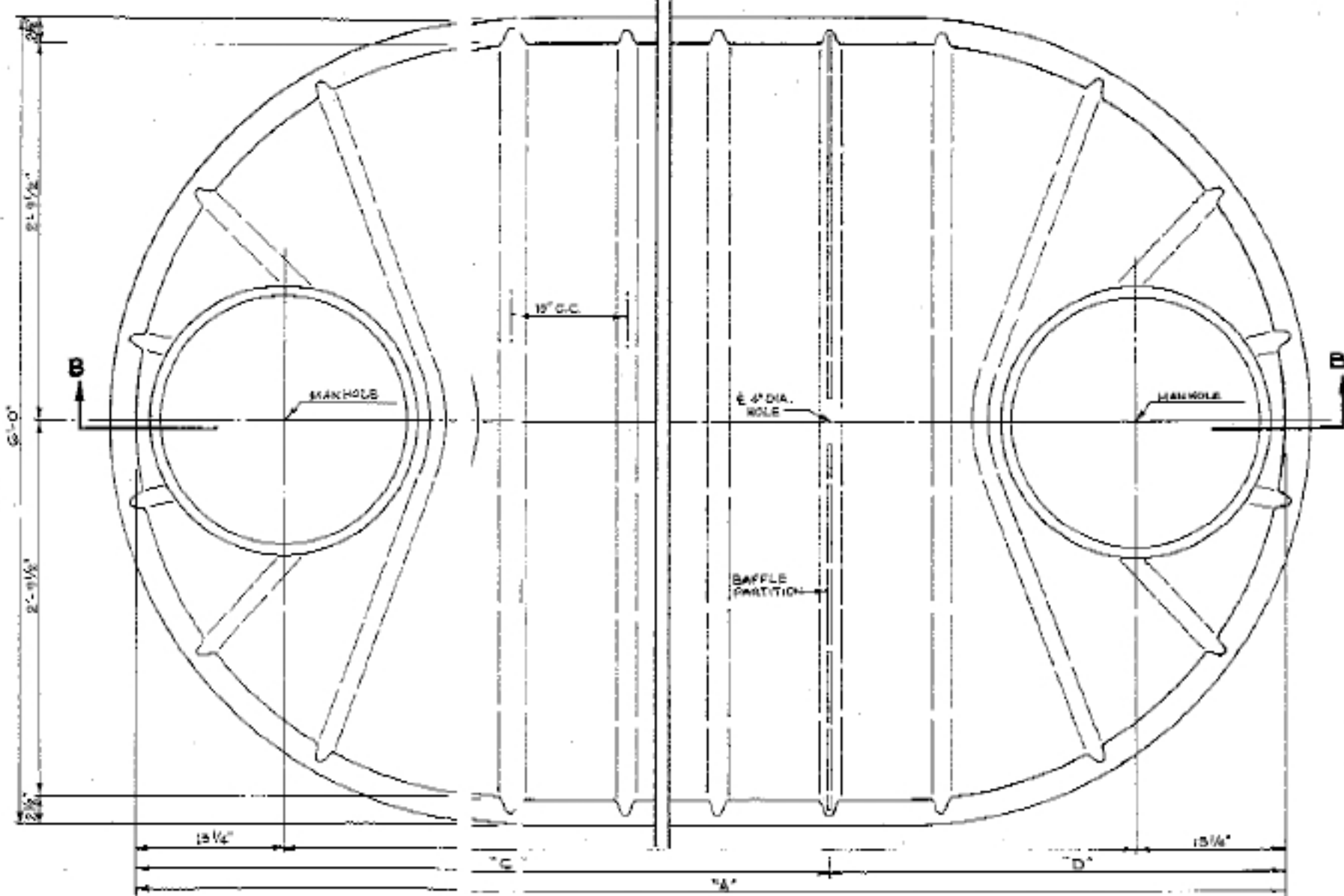
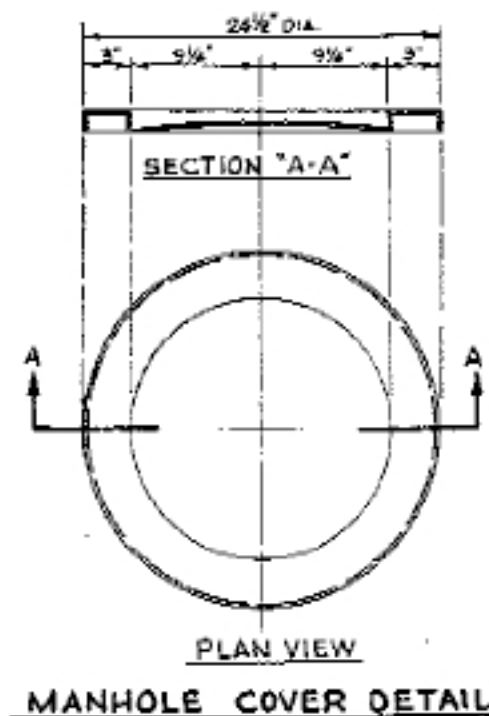
EMBLEM DETAIL
SCALE: FULL SIZE

CIVIL ENGINEER:

William C. Johnson
R.G. 10854 AUG. 16, 1972



SECTION "B-B"
LONGITUDINAL SECTION



PLAN VIEW

WILLIAM C. JOHNSON
CIVIL ENGINEER

781 PINE ST. 850 BUFF, CALIFORNIA

G & B FIBERGLASS PRODUCTS
PMB-6C-115
300 S. HIGHLAND SPRINGS AVE.
BANNING, CA 92220